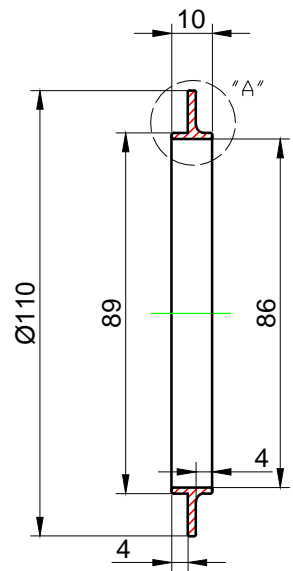
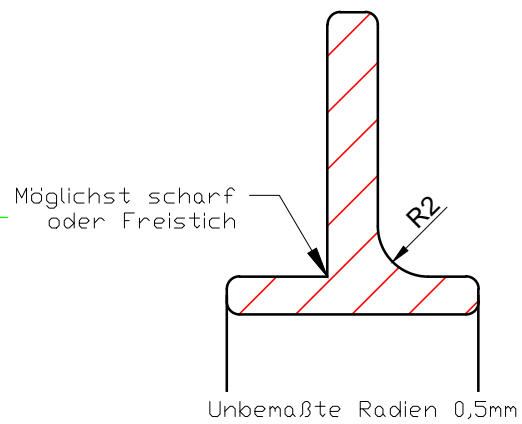


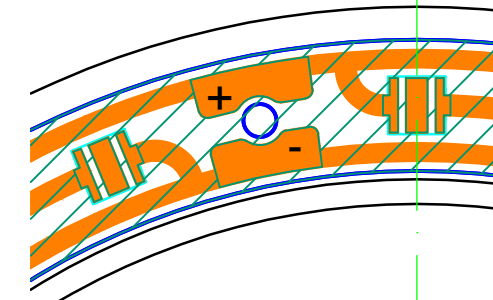
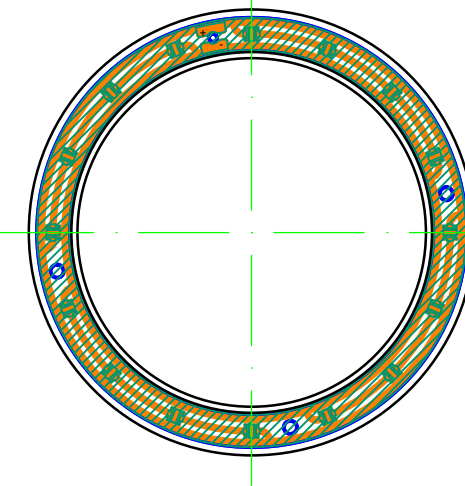
Haltering



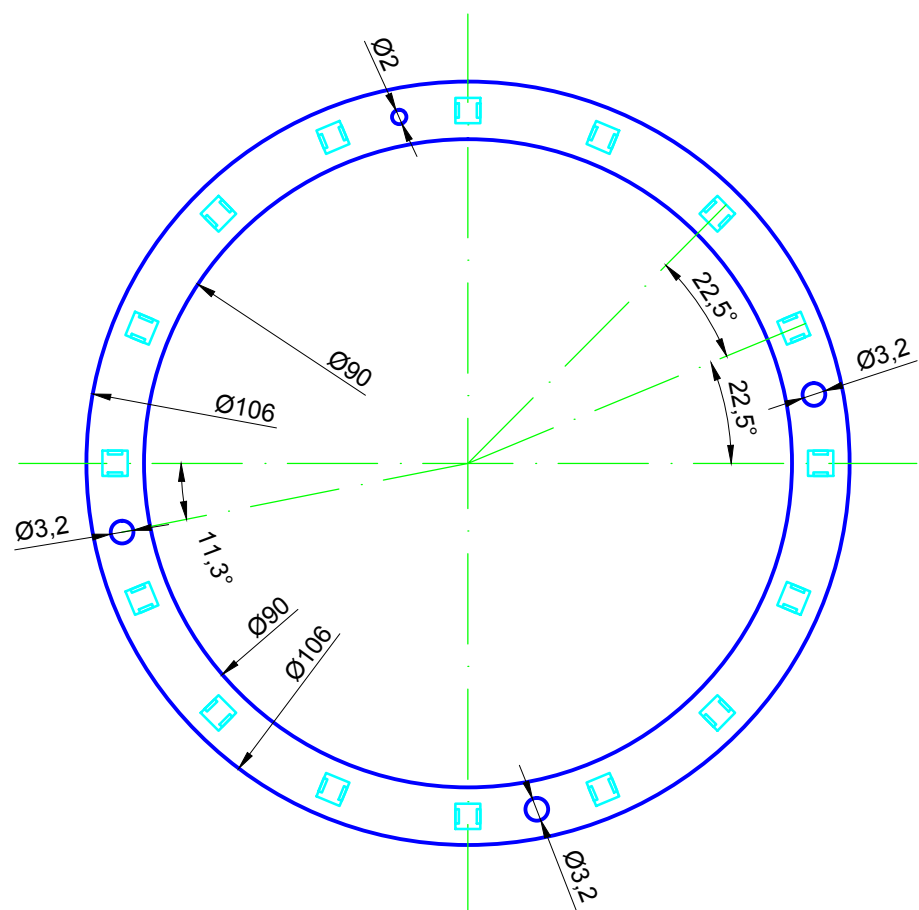
Detail A



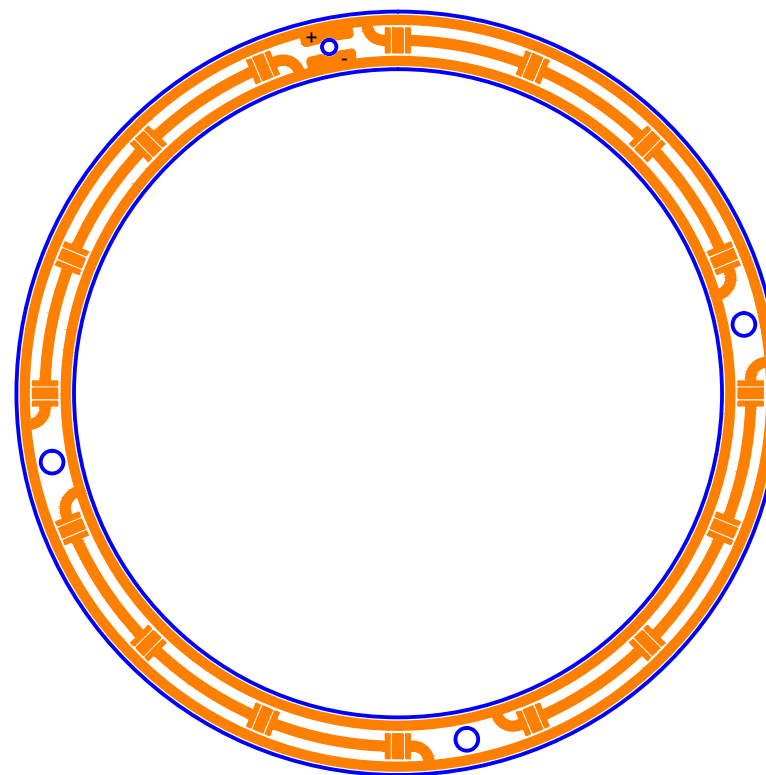
Draufsicht
Zusammenbau



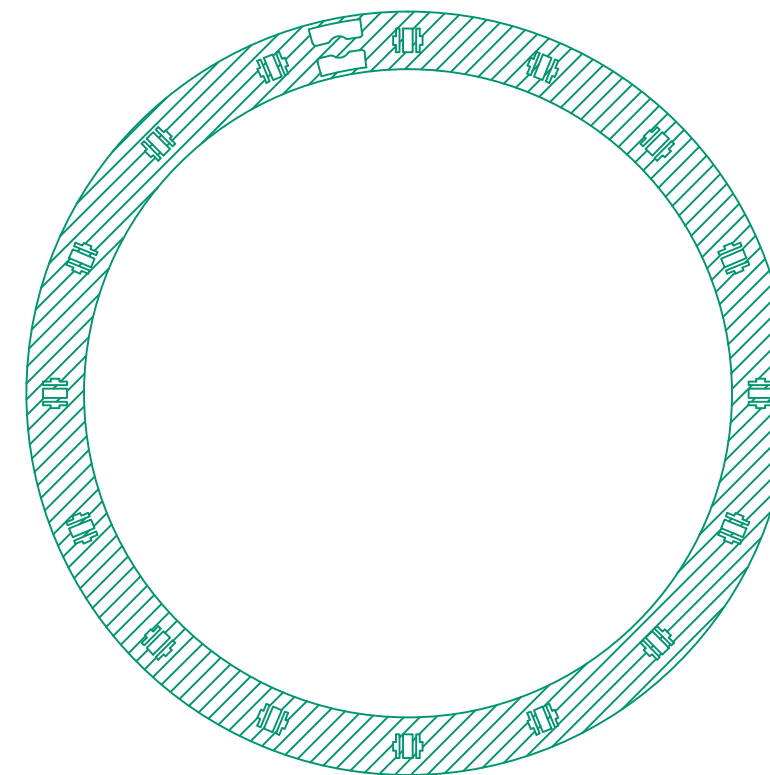
Abmaße Platine



Leiterbahnansicht



Lötstopmaske



Datei: Ringblitz.dwg	
Zeich.Nr.: 2013-0001	
Name	Datum
freig.:	-
gep.:	-
gez.:	Nothnagel, Stefan 2013-10-30
Format:	A3 Rev. 0
Maßstab:	Ohne Blatt: 1 von 2
Copyright by: Stefan Nothnagel, Heisinger Straße 370, 45259 Essen mail@nothnagel.org - www.nothnagel.org	

LED-Ringblitz

- Platinenträger (Aluminium)
- Ansicht Platinen